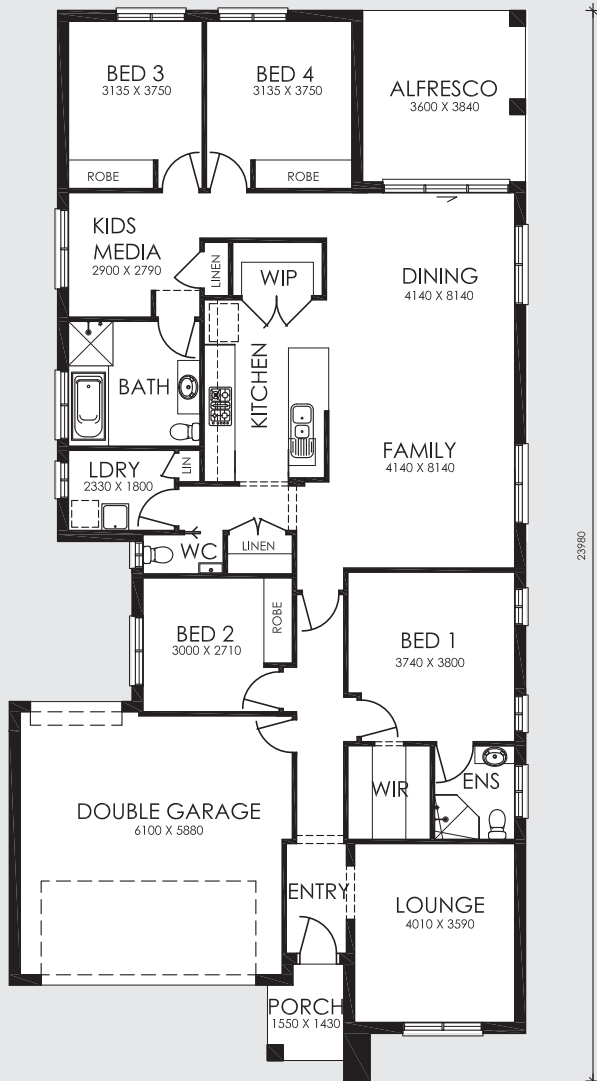


Birchwood235



FEATURES

- 4 Bedrooms with built in robes
- Large Family / Dining / Kitchen Area
- Separate Lounge
- Double Lock-Up Garage
- Outdoor Alfresco
- Ensuite & Wip
- Powder Room
- Kids Media Room

AREA SPECIFICATIONS

Living Area	180.75 m ²
Porch	2.75 m ²
Garage	38.45 m ²
Alfresco	13.82 m ²

TOTAL 235.77 m²

Width 11.56m and Depth 23.98m



Ph: 1300 787 291

www.greendalehomes.com.au